

Bluetooth TLock APP

Door Controller Access Control

System With Card Reader



K2-BT



K2F-BT

what is Bluetooth Door ccess Control System?

Bluetooth is an ideal technology for contactless mobile credentials for access control and door entry. Bluetooth door entry utilises each individual user's smart phone with installed app for wireless transmission of access credentials and a Bluetooth Access proximity reader to receive the signal.

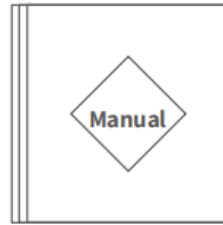
Specifications

Model:	K2/K2F
Dimensions:	W79mm x H125mm x T15.5mm
Material:	Aluminum frame/Tempered glass panel
Communication:	Bluetooth 4.1
Supporting systems:	Android 4.3/IOS7.0 above
Stand-by current:	5mA
Operating current:	1A
Power supply:	12V
Unlocking time:	1.5S
Waterproof level:	IP66
Card capacity:	20,000 Cards

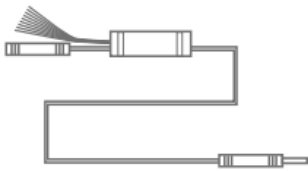
Accessories



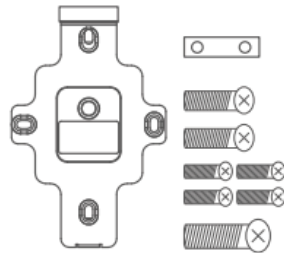
Access controller x1



Manual x1



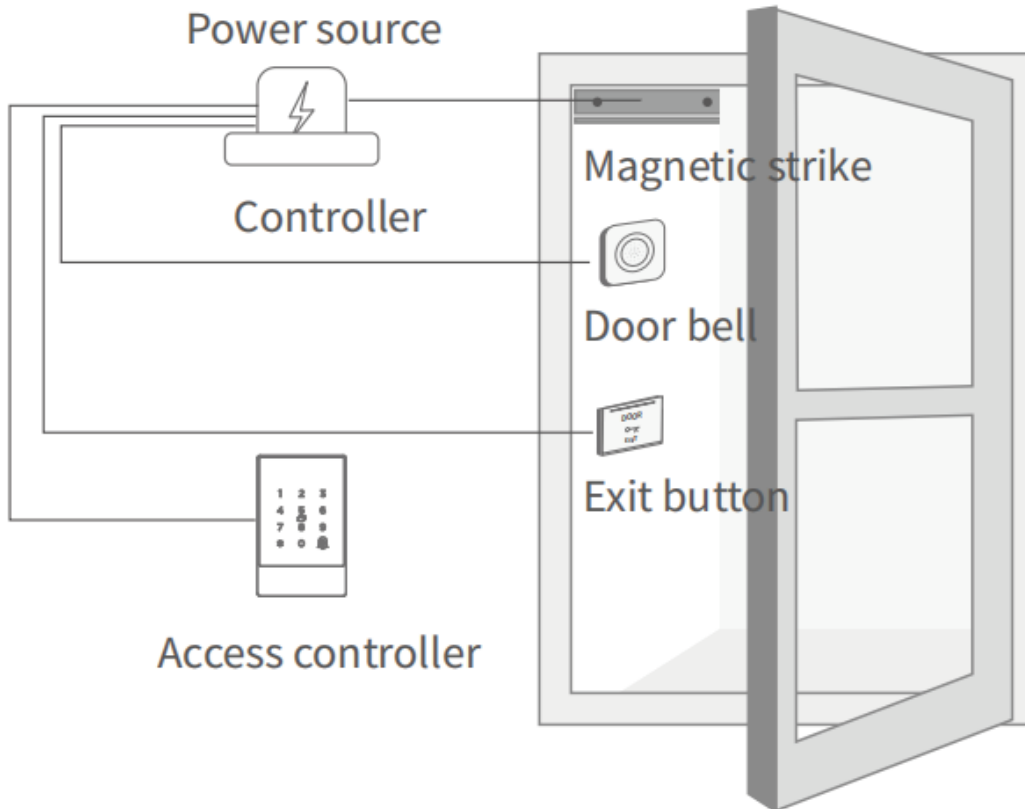
Cable x1



Hook x 1

Mounting plate x 1
Screw: 2+4+1

Illustration



S4A Industrial Co., Limited

Address: The 2nd floor, Jinmin'an Industrial Zone, #529, Bulong Rd.
Bantian St. Longgang Dist. Shenzhen, PRC.. CN 518131



Tel: +86 755 29450011

www.s4a-access.com