



Please read the manual carefully before using the Device

1.Features

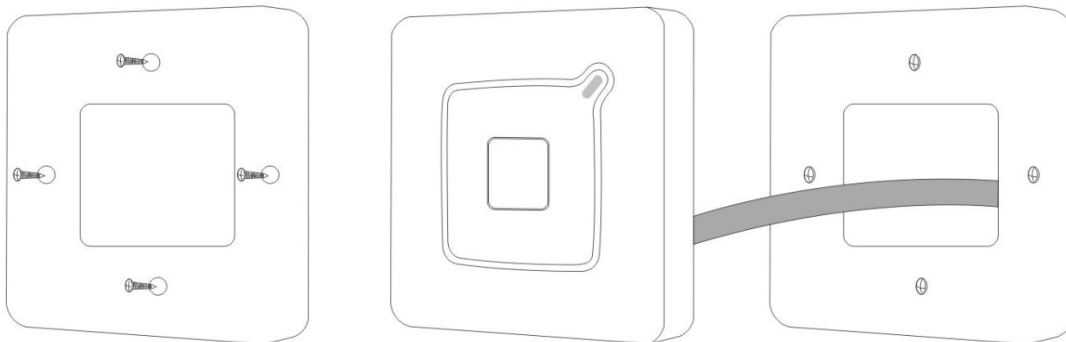
- > Metal shell, anti-vandal
- > Very low power consumption, standby current less than 30mA
- > WG 26 output
- > Fast Search speed : time between reading card and opening the door is less than 0.1S

2.Specifications

Operating Voltage	9-12V DC
Card type	EM/Mifare
Reading Distance	3-6 cm
Quiescent Current	≤30mA
Operating Temperature	-45°C ~ 60°C
Operating Humidity	10%- 90% RH
Waterproof	Conforms to IP68
Dimension	86*86*19 MM

3.Installation

- > Drill the holes on the wall according to the hole size of the back cover or install the cable box on the wall. And Fix the back cover firmly on the wall with the supplied screws. (Picture below)



- > Thread the cable through the cable hole, connect the wire needed, wrap unused wire with insulating tape in case of short circuit
- > Fix the front cover to the back cover with screw driver

4.Wiring

Wire No.	Function	Color	Description
1	LED	Blue	Connect controller LED
2	Beeper	Yellow	Connect controller beeper
3	D0	Green	WG output line D0



4	D1	White	WG output line D1
5	+12V	Red	Power supply +12V
6	GND	Black	Power supply -12V

5.Wiring Diagram



6.Packing List

Name	Model	Quantity	Remarks
RFID Reader	U-P005	1	
User manual	U-P005	1	
Rubber plug		2	Φ6mm×30 mm, used for fixing
Self tapping screws		2	Φ4mm×28 mm, used for fixing